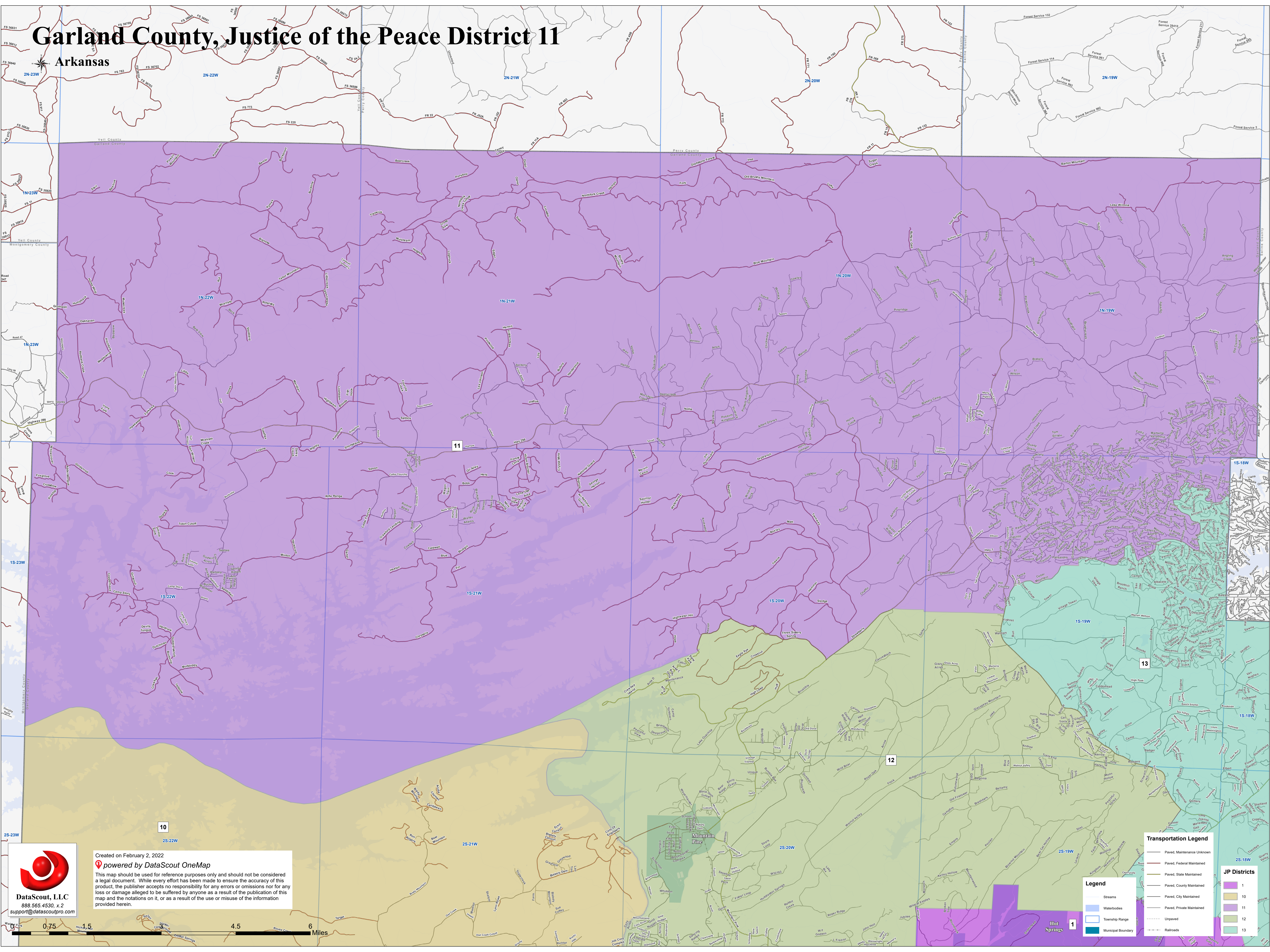


Garland County, Justice of the Peace District 11

Arkansas



Created on February 2, 2022
powered by DataScout OneMap
This map should be used for reference purposes only and should not be considered a legal document. While every effort has been made to ensure the accuracy of this product, the publisher accepts no responsibility for any errors or omissions nor for any loss or damage alleged to be suffered by anyone as a result of the publication of this map and the notations on it, or as a result of the use or misuse of the information provided herein.



Legend

- Streams
- Waterbodies
- Township Range
- Municipal Boundary

Transportation Legend

- Paved, Maintenance Unknown
- Paved, Federal Maintained
- Paved, State Maintained
- Paved, County Maintained
- Paved, City Maintained
- Paved, Private Maintained
- Unpaved
- Railroads

JP Districts

- 1
- 10
- 11
- 12
- 13